



#1 IN THE NATION FOR QUALITY PATIO DOORS\*

# Preferred French Door

VINYL IMPACT & NON-IMPACT

**P&G** WinGuard<sup>®</sup>  
VINYL

**P&G** EnergyVue<sup>®</sup>

# Designed to fit your style.

INTRODUCING PGT® VINYL PREFERRED FRENCH DOORS.

## EXPLORE OUR PRODUCT LINES

Our EnergyVue® Preferred French Door, FD5455, is engineered for strength, safety, and beauty. It features the elegance of a wood door while elevating energy efficiencies and durability, especially in coastal areas where salt may corrode your doors.



The WinGuard® Vinyl Preferred French Door, FD5555, combines the performance of the EnergyVue® door with our impact-resistant glass. This next level door helps protect your loved ones from severe weather, would-be intruders, and noise pollution. Plus, impact-resistant products can help lower your insurance premium while the overall value of your home increases.

All PGT® products are continuously tested, certified, approved, and rated by the industry's most respected, accredited organizations including Miami-Dade Notice of Acceptance, AAMA Tested/Keystone Certified, Florida Product Approval, ENERGY STAR®, National Fenestration Rating Council (NFRC), and Sound Transmission Class (STC).

## STANDARD FEATURES

Both lines come standard with a white frame, ideal for Single or Double door styles in new construction and remodeling projects. In terms of glass, EnergyVue® is equipped with insulating glass while WinGuard® Vinyl comes standard with laminated insulating glass.

- Brushed stainless steel hinges offer smooth fingertip operation
- Multi-point locking system provides added strength and security
- Mechanically fastened panel joinery offers the allure of a wood door with increased reliability
- Matching sidelites and transoms (featured on the right) help fill the room with a substantial amount of light
- Accommodates the architectural design of any home with the ability to use European-style hardware

### FRAME COLOR

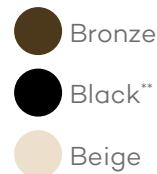


White

## PREMIUM OPTIONS

- High-performance Low-E
- Heat-strengthened glass
- Privacy glass
- Popular glass tints
- Grid styles and patterns
- ENERGY STAR® options like argon gas

### FRAME COLORS



*Custom frame colors are also available.*

*\*2019 Builder Brand Use Report.*

*\*\*Black is available on the exterior only with white on the interior. All-black frames will be available in summer of 2020.*

## STANDARD HARDWARE OPTIONS

Series 800 handle



Satin nickel finish



Oil-rubbed bronze finish

## PREMIUM HARDWARE OPTIONS

Series 100 handle



Satin nickel finish



Oil-rubbed bronze finish

Contemporary handle



Satin nickel finish



Oil-rubbed bronze finish

## STANDARD DOOR CONFIGURATIONS



Single Door



Double Door



Narrow Frame



Full Jamb



Full Head & Sill



Full Frame

## STANDARD SIDELITE AND TRANSOM CONFIGURATIONS

## PREFERRED FRENCH DOOR AT A GLANCE



### 1. ANCHOR PLATE

Creates a more secure installation that can withstand high winds and pressure



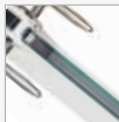
### 2. INSTALLATION SCREW COVER

Hides installation screws for a beautiful appearance



### 3. LAMINATED INSULATING GLASS

Featured in our WinGuard® Vinyl Preferred French Door



### 4. INSULATING GLASS

Featured in our EnergyVue® Preferred French Door



### 5. CELLULAR VINYL FRAME AND PANEL

For the feel of a wood door with improved energy performance



### 6. VARIOUS FRAME COLORS



### 7. STAINLESS STEEL HINGES

For smooth, effortless, corrosion-resistant operation



### 8. MECHANICALLY FASTENED TRADITIONAL PANEL JOINERY

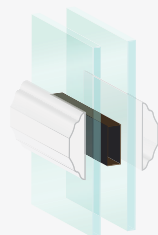
For strength and durability with the aesthetics of a wood door



### 9. THRESHOLD AND COVER

Design hides weep-holes for a sleek look

### 10. GRID STYLES



Simulated divided lite



Flat grid between the glass



Contoured grids between the glass





INVENT. BUILD. DELIVER.

A collection of the best brands in windows and doors coming together to invent, build, and deliver the highest-quality and safest products in the fenestration industry.

THE PGT INNOVATIONS FAMILY OF BRANDS

---



PGTWINDOWS.COM | N. VENICE, FL

©2020 PGT CUSTOM WINDOWS + DOORS. A PGT INNOVATIONS BRAND.

04/20 ME0100312